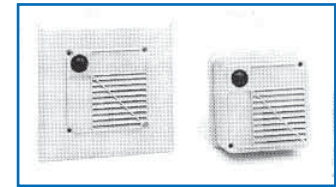


## STATIONS WITH COMPRESSION DRIVER AND CALL SWITCH

**WPVT-S/WPVT-F Series.** Surface and flush-mounting outdoor intercom and paging loudspeaker assemblies provide weatherproof and vandal-proof two-way communication with call-in capability for remote guard and security stations, entry and exit gates, perimeter doors and parking garages. Environment-resistant assemblies include die-cast water sealed VT Series 8 Ohm compression driver loudspeaker available with 15 or 2 Watt transformer and pre-mounted call SPDT-type switch protected by a weatherproof rubber boot. WPVT-S Series are surface mounting assemblies size 4 1/4" SQ. x 3 3/8" D. WPVT-F Series are recess/flush-mounting versions size 6" SQ. x 3 3/8" D. Both model series are finished in neutral gray(N) epoxy and install to a standard 4" E.O. Box (not included). A large selection of installation accessories are also available. See Installation Accessories for Voice/Tone Loudspeakers in section 6, page 61.

MODEL	POWER RATING	XFMR	FREQUENCY RESPONSE	SENSITIVITY AS MICROPHONE
WPVT-1SN(FN)	15W (8Ω)	—	600-5500HZ	-26dBm
WPVT-4SN(FN)	15W	25V		
WPVT-6SN(FN)	2W	25V		



WPVT-F Series

WPVT-S Series

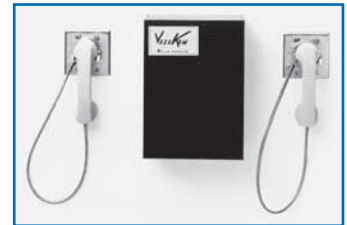
# Visikom Intercommunication System

## VISIKOM TELEPHONE VISITATION SYSTEM

**PVP-24/PVP-6.** Modular telephone intercommunication system accommodates up to 24 independent telephone conversations of two or more telephone stations each for use where physical separation between communicating individuals is desired. Typical applications include customer telephones and visitation areas of detention, correctional and penitentiary facilities. Unique filter circuitry employed assures privacy and isolation from crosstalk. Plug-in design provides simple installation, servicing and expansion capability. System is comprised of Model PVP-24 control unit, Model PVP-6 plug-in interface module and standard telephone stations with two form "C" (DPDT) hook switches including Atlas Sound Model Series CE and DP-1. Surface-mounting control unit includes integral power supply, four 3/4" cable access holes and ports for installation of up to four PVP-6 modules. Each plug-in module will control up to six isolated telephone circuits for a total system capacity of 24 circuits. Chassis and lift-off cover are constructed of 18-gauge CRS and finished in textured black epoxy. Wiring requirements are two conductor, telephone type. For complete wiring and installation information, request manual #245691.

MODEL	DESCRIPTION	POWER REQ.	POWER OUTPUT	CAPACITY	DIMENSIONS
PVP-24	Plug-in Interface Module	117VAC	8VAC @ 2 Amps	Four PVP-6	9 1/2" x 13" x 4 1/2" (241 x 330 x 114 mm)

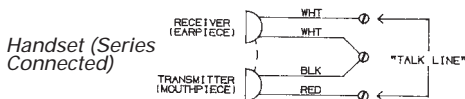
\*System uses telephone station Model Series CE and DP-1. See "Telephone Intercom Stations and Accessories" — this section.



Visikom System with (2) CE-2-AC Telephones

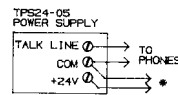
## COMMON TALK TELEPHONE INTERCOM APPLICATIONS

Atlas Sound offers a selection of telephone stations and related accessories which can be used to create a variety of common talk telephone intercom systems. For details on individual models, refer to specification sheet SL8-1434, "Telephone Intercom Accessories."



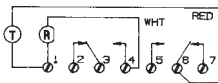
All of the common talk telephone stations described on this sheet utilize series-connected handset elements.

### Using a Common Talk Line



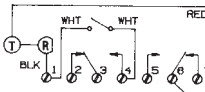
Two or more (handsets) may be connected in parallel across a common "talk line," which must then be connected to an appropriate DC voltage source (the talk-line output of the Model TPS24-05 power supply combined with any 24VDC power supply).

### CE and DP-1A Series Telephones



Each telephone intercom station is equipped with a two-form "C" (DPDT) hookswitch and is wired to the handset.

### "PT" Option for CE-2A and DP-1A



A commonly used option available on the CE-2A and DP-1A telephone station is the handset-mounted pushbutton, known as the "PT" option.



PVP-24 with (4) PVP-6 Installed (cover removed)

**EIGHT**



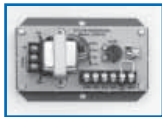
TS302A



CE-2A-AC



DP-1A



LT600-VC



TPS24-05

## TELEPHONE INTERCOM ENCLOSURE

**TS302A** Surface-mounting 2-gang enclosure provides for surface mounting of CE Series intercom stations/ CRS unit is finished in neutral gray epoxy.

MODEL	TYPE	MOUNTS INTERCOM STATION	DIMENSIONS (W x H x D)
TS302A	Surface	CE-2A	4 $\frac{1}{8}$ " x 4 $\frac{1}{8}$ " x 2 $\frac{1}{2}$ "

## WALL MOUNT HANDSET/HOOKSWITCH ASSEMBLY

**CE-2A.** Economical handset assembly provides clear and crisp speech reproduction for intercom and paging functions. It includes a "500" style handset and two form "C" (DPDT) hookswitches mounted to a 2-gang plate with rear mounted terminal strip, color coded leads and spade lugs. Model features a chrome hanger hookswitch, neutral handset, flexible coil cord and stainless steel plate for mounting directly to a standard E.O. Box. Factory-wired options are listed below.

**PT Option.** Factory-installed push-to-talk handset button provides for relay control and a variety of switch, communication, and signaling functions. Contact switch arrangement is a SPDT wired as normally open. Option is available on CE and DP Series telephone stations as noted.

**AC Option.** For telephone station installations requiring vandal protection, this 25" stainless steel armored cable is securely fastened to the mounting plate and handset to provide service-free operation in public access areas, municipal buildings, and warehouses. Option available on Model CE-2 only.

MODEL	COLOR	MOUNTING PLATE	INCLUDED OPTIONS
CE-2A	Neutral	2 Gang	—
CE-2A-AC	Neutral	2 Gang	25" Armored Cable
CE-2A-PT	Neutral	2 Gang	Push to Talk Switch

\*Add one suffix to base model number (example: CE-2A-PT or CE-2A-AC).

## DESK INTERCOM STATION ASSEMBLY

**DP-1 Series.** Traditional "2500" style desk phone is finished in neutral for use in virtually any telephone intercom system. Assembly includes handset, two form "C" (DPDT) hookswitches, transmitter, receiver, housing with blank dial and coiled cord. Unit is wired to an interior mounted terminal block and supplied with spade lugs for quick modification. Unit does not include ringer, induction coil. Finished in neutral gray.

MODEL	DESCRIPTION	COLOR
DP-1A	Desk Phone	Neutral

## 600-OHM IMPEDANCE MATCHING TRANSFORMER

**LT600-VC.** Versatile unit for matching telephone-type, 600 $\Omega$  line circuits with HI-Z circuits. It can also be used as a 600 $\Omega$  to 600 $\Omega$  isolation transformer. Recommended for coupling of telephone-type lines into amplified sound systems, background music and paging systems, recording equipment, or studio electronics. Built-in potentiometer provides optional adjustability for the 25K output level. The 600 $\Omega$  input may be matched to 600, 10K and 25K $\Omega$  circuits. All components are mounted on a printed circuit board. Steel chassis includes mounting ears and "insta-mount" tape. Transformer is shielded to minimize induced hum. Unit includes a phono jack on the output side for convenient connection to amplifier or other equipment circuitry. Jack can be connected to various transformer taps via barrier strip jumper. (Factory-installed jumper connects jack to potentiometer output).

MODEL	INPUT IMPEDANCE	OUTPUT IMPEDANCE	FREQUENCY RESPONSE	DIMENSIONS
LT600-VC	600 $\Omega$	600, 10, 25 $\Omega$	60Hz-12kHz	4 $\frac{1}{8}$ " L x 3 $\frac{1}{8}$ " W x 1 $\frac{1}{8}$ " H (124 x 80 x 44mm)

## TELEPHONE POWER SUPPLY

**TPS24-05** Unit is a combination 24VDC/TALK voltage power supply engineered to power most common-talk telephone intercom systems (see Section 8). Finished in black epoxy and complete with 68 power cord. For information on common-talk intercom applications, request SL8-1433.

MODEL	INPUT	OUTPUT (Nom.)	RIPPLE @ FULL LOAD	REGULATION 0 - FULL LOAD	SIZE L x W x H	WEIGHT
TPS24-05	117VAC 60Hz, 36W	24VDC $\frac{1}{2}$ Amp Talk Line	0.5mV	500mV	6 $\frac{1}{4}$ " x 3 $\frac{1}{8}$ " x 2" (124 x 80 x 44mm)	3.0 lbs. (1.4kg)

## TELEPHONE ACCESSORIES AND REPLACEMENT PARTS

Suitable for use with CE Series handset/hookswitch assemblies.

MODEL	DESCRIPTION
CX-EA	Handset mounting noise cancelling transmitter, neutral
DY-1	Dynamic transmitter allows the telephone to function as a microphone for high intelligibility paging. Replace carbon transmitter with DY-1 during installation.
RU-1	Replacement handset receiver (150-200 $\Omega$ )
TU-1	Replacement handset transmitter (50 $\Omega$ )